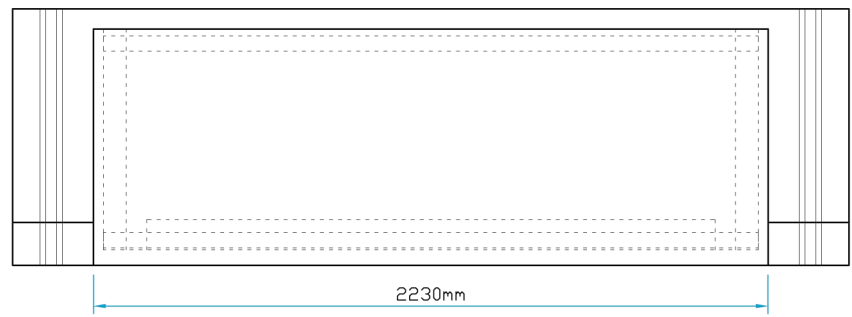
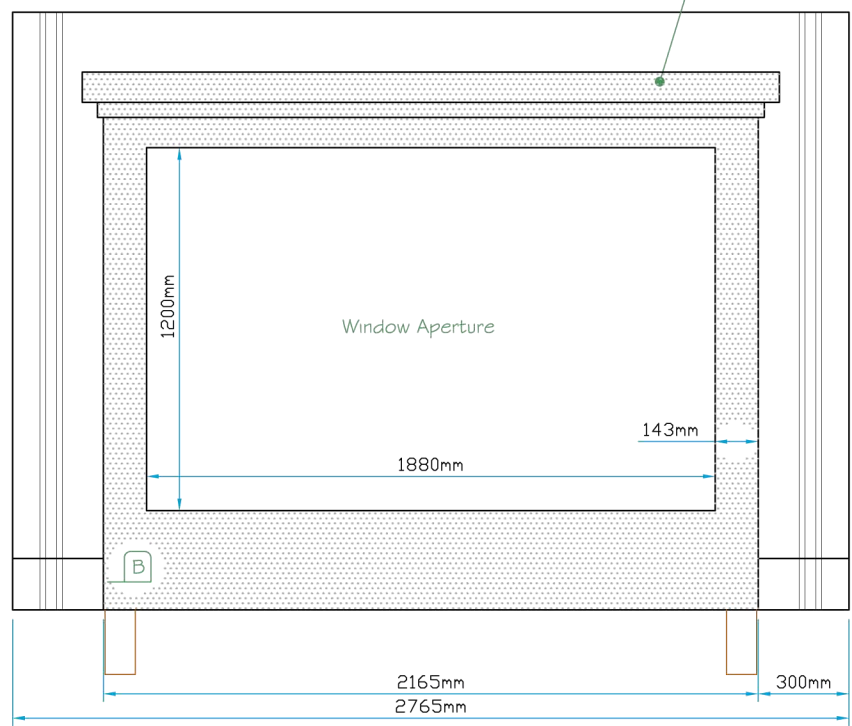


Plan View



A

Lead Effect Roof



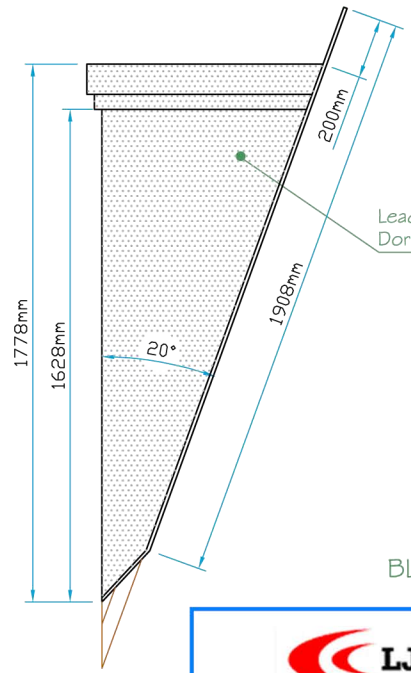
Window Aperture

B

A

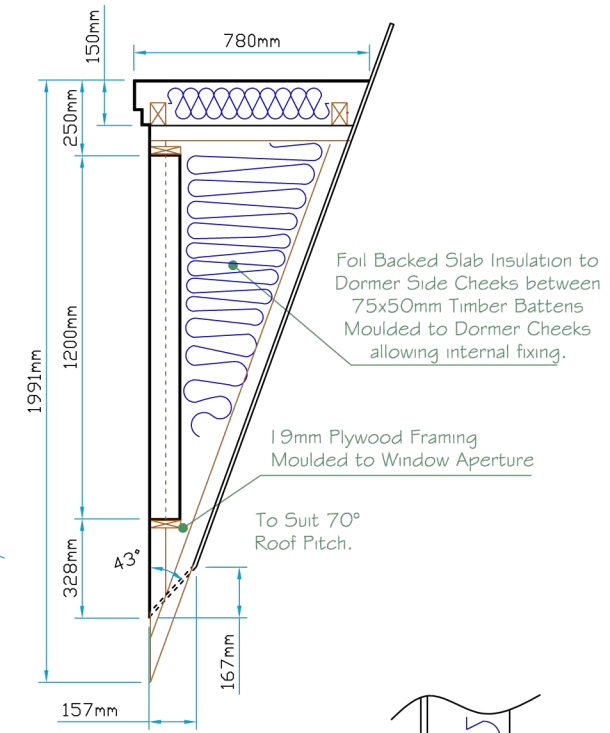
Front Elevation

Side Elevation



Lead Effect Dormer Cheeks

Section A-A

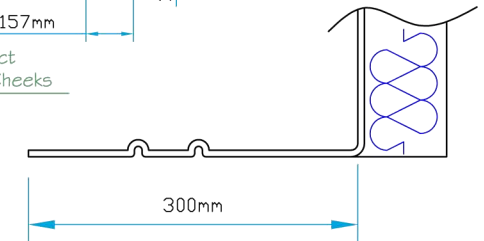


Foil Backed Slab Insulation to Dormer Side Cheeks between 75x50mm Timber Battens Moulded to Dormer Cheeks allowing internal fixing.

19mm Plywood Framing Moulded to Window Aperture

To Suit 70° Roof Pitch.

Section B-B



BLOCK A - WINDOW No. W4- 4, 5, 6, 9,

 <p>LJM glassfibre ltd. Bespoke Innovative G.R.P. Solutions</p> <p>12a Keenaghan Road, Rock, Dungannon Co Tyrone, BT70 3JL</p>		<p>Model: Type B Flat Dormer 70deg 1880x1200</p>	
		<p>Date: 09/12/09</p>	
<p>Scale: 1:25</p>		<p>Size: A4</p>	
<p>Rev: A</p>		<p>Sheet No: 1 of 1</p>	
<p>Rev: A</p>		<p>Rev: A</p>	
<p>Drw Title: Type B Flat Dormer 70deg 1880x1200</p>		<p>Drw No: 0257/A</p>	

Revision	
A	AMENDED INLINE WITH COMMENTS 09/05/06