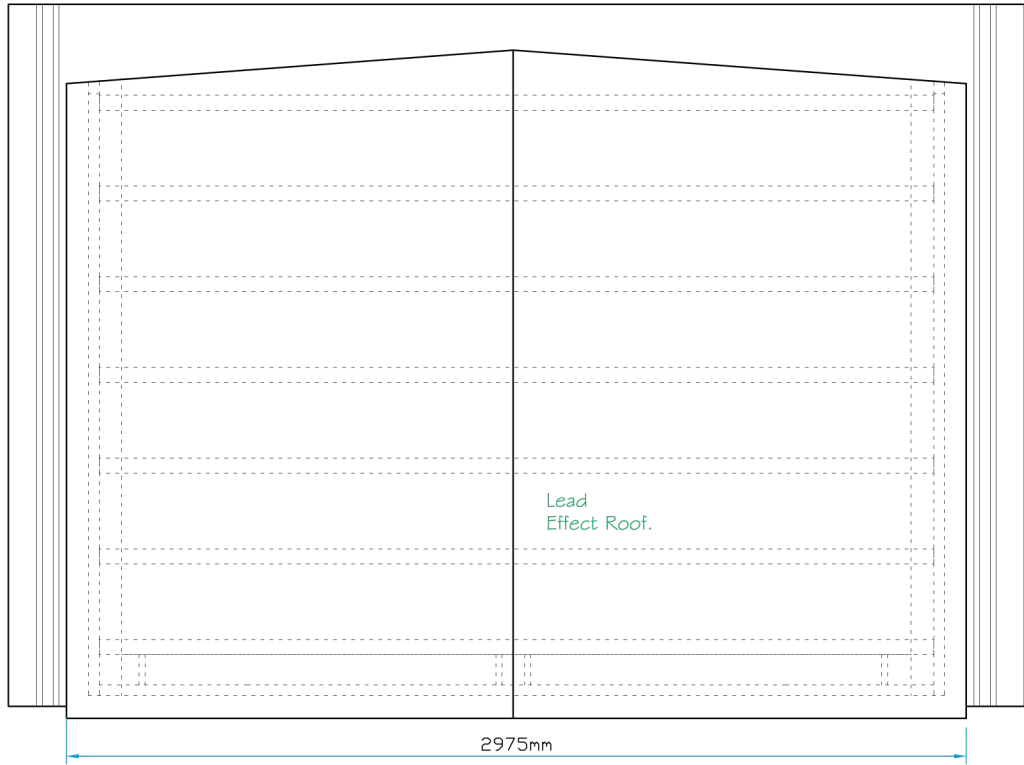
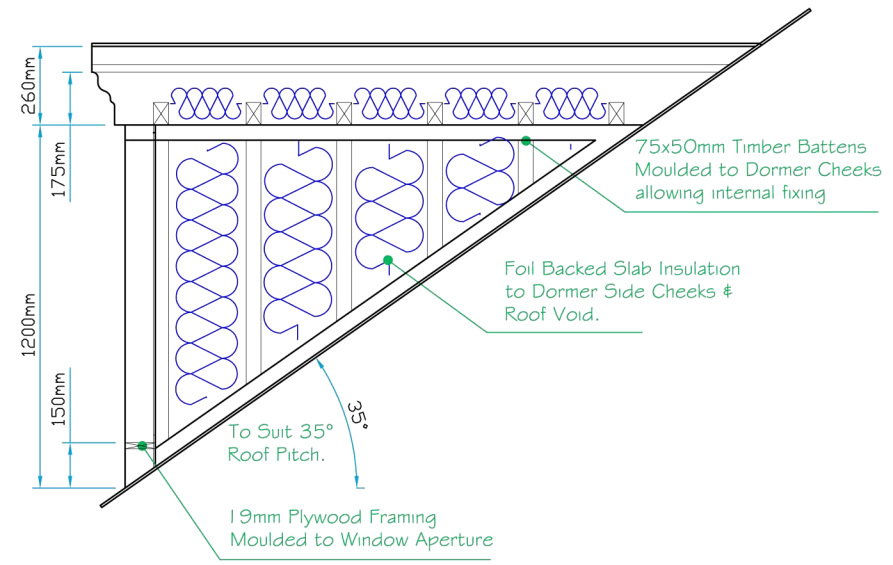



Plan View



Section A-A



 <p>LJM glassfibre ltd. Bespoke Innovative G.R.P. Solutions</p> <p>12a Keenaghan Road, Rock, Dungannon Co Tyrone, BT70 3JL</p>			<p>Model: Type D20 Dormer 35° with 2x1050x1200 Apertures</p>	
			<p>Date: 09/12/09</p>	
<p>Scale: 1:25</p>		<p>Size: A4</p>		
<p>Drw by: G.J.G.</p>	<p>Chk'd: G.T.</p>	<p>App'd: G.T.</p>	<p>Sheet No: 2 of 2</p>	<p>Rev: 0</p>
<p>Drw Title: Type D20 Dormer 35° - 2x1050x1200</p>			<p>Drw No: 0176/0</p>	